



Parent Information Session

Stage 3 2024

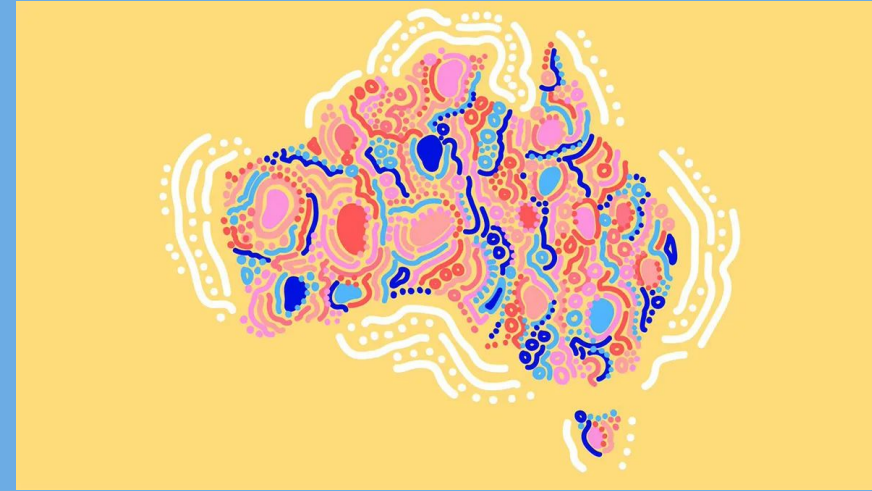


Acknowledgement of Country

We would like to start by acknowledging that we are meeting on the traditional lands of the Darkinjung nation.

We pay respect and acknowledge the First Nations ancestors that have walked and cared for these lands for many generations before us.

We acknowledge the Elders, both past and present who are the knowledge holders, teachers and leaders, and the youth who are the emerging leaders in this community.



Stage 3 Team

2024

Dennis Jarmaine - 5/6J

Brett MacDonald - 5/6M

Cassie Fuller - 5/6F

Emma Gould - 5/6G

Roxanne Davies

Assistant Principal

Principal - Ben Thomas

AP - Early Stage 1 - Emma Gordon

AP - Stage 1 - Esther Hartley

AP - Stage 2 - Louise Duck

APC&I / AP Stage 1 - Jodie Ward

KEY LEARNING AREAS

English - Blueback by Tim Winton

Mathematics - Units of work developed by the Department of Education
Number and Algebra, Measurement and space, Statistics and probability

Science - Mrs Ayton and Ms Metti

- Semester One - Electrical energy
- Semester Two - Earth and Space

History / Geography - Mr Blanch

- Semester One - Australia as a Nation
- Semester Two - Bushfires and Great Australian Landmarks

PDHPE - Rock and Water, Anti-bullying, Child protection, Cyber and Bike Safety

CAPA - Music - Mrs Irvin

- One hour per week in Semester One



What is the key aim for every student for the 2024 school year?

*The aim of schooling is
for **every** student to gain
at least a **year's worth of learning**
for a **year's input***

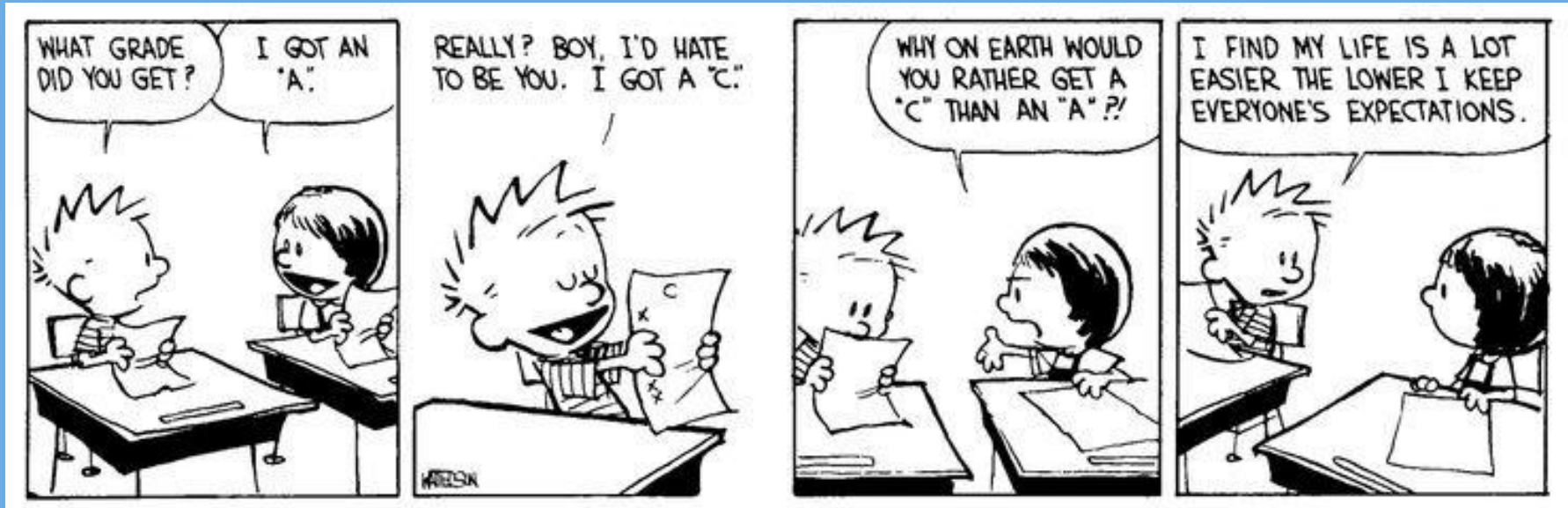
Collective efficacy is the collective belief of the staff and community of a school in their ability to positively affect students.

What works best?

2020 update

1. HIGH EXPECTATIONS

- Teachers' beliefs about their students influence how they teach and interact with them.
- High expectations are linked with higher performance for all students. The reverse can also be true. Students may achieve less than their full potential if expectations of their ability are low.



2. EXPLICIT TEACHING



- Explicit teaching practices involve teachers clearly showing students what to do and how to do it, rather than having students discover that information themselves.
- Students who experience explicit teaching practices make greater learning gains than students who do not experience these practices.

EXPLICIT TEACHING



EXPLAIN



MODEL



GUIDED PRACTICE

INDEPENDENT PRACTICE



INDEPENDENT



FLUENCY

3. EFFECTIVE FEEDBACK



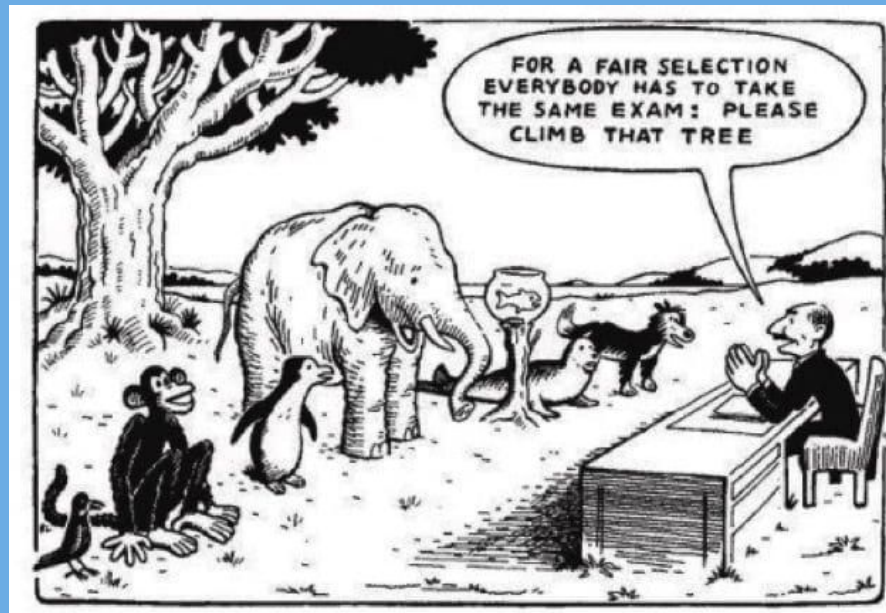
- Effective feedback provides students with relevant, explicit, ongoing, constructive and actionable information about their performance against learning outcomes from the syllabus.



- Display Learning goals and success criteria at the start of each lesson.
- Evidence is specific to the learning goal of that lesson.

4. ASSESSMENT

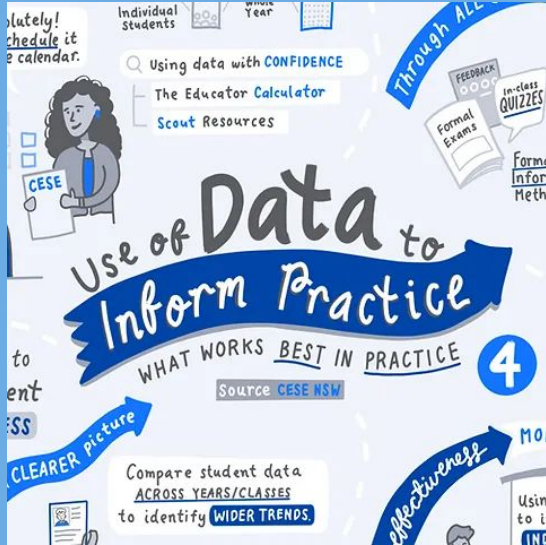
- High quality student assessment helps us know that learning is taking place.
- Assessment is most effective when it is an integral part of teaching and learning programs.



- Students are given a range of opportunities to demonstrate their knowledge in both formal and informal situations.

5. USE DATA TO INFORM PRACTICE

- Teachers use data to check and understand where their students are in their learning and to plan what to do next.



6. CLASSROOM MANAGEMENT



CLASSROOM MANAGEMENT
— IS NOT —
TIPS AND TRICKS.
— IT'S HOW WE —
RELATE, SPEAK,
ENCOURAGE,
GUIDE AND CARE.

- Classroom management is important for creating the conditions for learning.
- Effective classroom management minimises and addresses all levels of disengagement and disruptive behaviours.

PBL - Positive Behaviour for Learning

- Stellars are given out in the classroom and playground to students for displaying our 3 values – **Respect, Responsibility & Personal Best.**
- Rewards Day activities are suggested by students and occur at the end of each term.
- Certificates are awarded when students reach 25 Stellars - Class / Playground.
- PBL Values awards will be given out to 2 students twice a term at the Friday assembly. Parents/carers are invited to the assembly.

Managing Challenging Behaviours

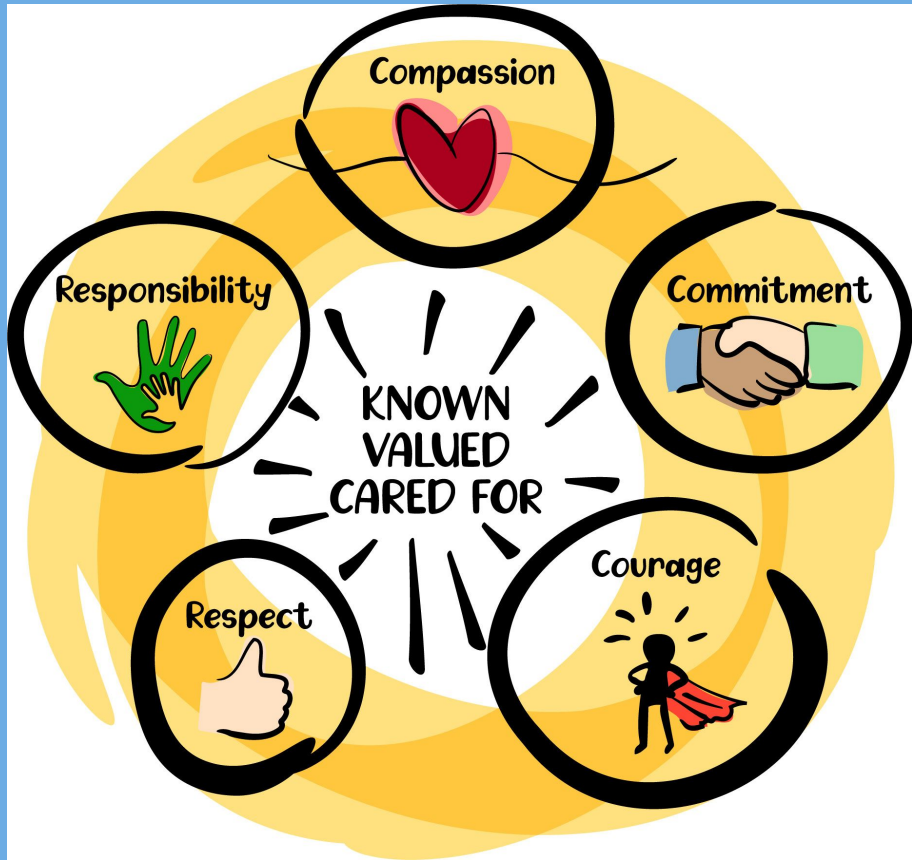
- Peg system - 2 warnings to modify behaviour. Third redirection leads to a time out.
- Parents/ carers will be notified and asked to return the letter
- New day - New start
- Planning Room is an opportunity to support students to reflect on a situation and to make better decisions.

House Families - Belonging

- Twice a term - Friday - 12:20 - 1:20
- Sessions designed to develop a sense of belonging K-6



WELLBEING



- Students learn best when they have a high level of wellbeing. Student wellbeing is a broad term that includes good mental, physical and emotional health, feeling supported in learning, building healthy relationships and having a strong sense of meaning and purpose.
- AT ABPS: Teachers support students' wellbeing by creating a safe environment, helping students to feel that they belong, valuing their opinions and perspectives, encouraging them to be interested in learning, helping them to manage their emotions and develop positive relationships with teachers and other students.

Collaboration

allows us to
know

more than we are
capable of knowing
by

ourselves.

- Paul Solarz

8. COLLABORATION

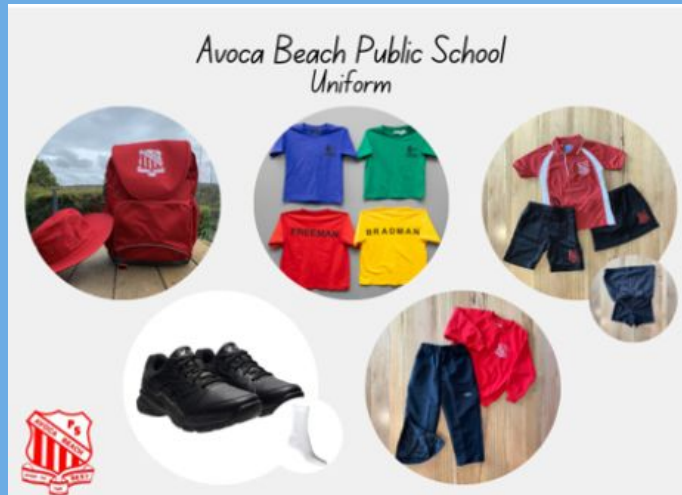
- Students learn best when teachers collaborate. Collaboration involves teachers working together with other teachers and experts from outside the school to improve their teaching.
- AT ABPS: Effective collaboration includes teachers planning lessons and teaching programs together, observing each other's lessons and giving feedback, and discussing and thinking about issues related to their work.

General Information

Stage 3 – Canberra Excursion

- Thank you for indicating your child's attendance
- Date: Monday 25th - Wednesday 27th March
- Please contact the class teacher with any concerns
- Payments can be made in instalments

Uniform -



COMMUNICATION

- Sources of information:
- ***Your child's classroom teacher.***
- Assistant Principal - Roxanne Davies
- Principal - Ben Thomas
- SENTRAL APP - Attendance messages
- School fortnightly newsletter
- SCHOOL BYTES - notes
- Parent / Teacher Interviews will be available at the end of Term 1.
- P&C members / meetings- including the Facebook profile

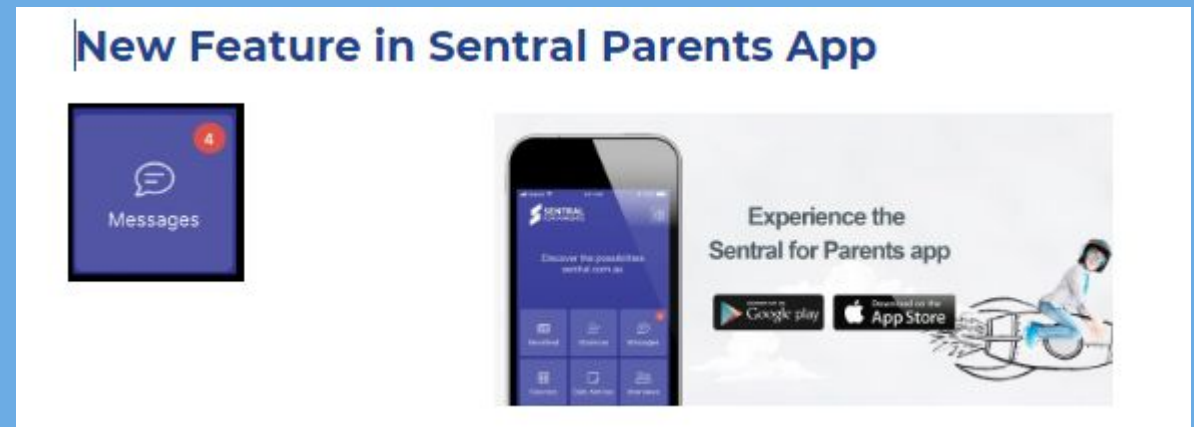


School Website

Communication - message via Sentral for Parents App

Term 1 – Week 4 we are delighted to be trialling a new feature within the app to allow classroom teachers to communicate with parents directly through Messages.

- Parents will only be able to send messages to the staff designated as ‘teachers’ of their children’s classes. From the home screen, you can see if you have any new messages waiting for you.
- Teachers will check Messages daily through Sentral before 8:30am Monday to Friday and respond at their earliest convenience.
- We ask that parents understand and respect that teachers cannot respond to messages while they are teaching, on duty or in meetings and therefore will not respond immediately to messages.
- Parents are still required to contact the office for any urgent or general messages.



PDHPE/Sport

Sport/PE days: Wednesday and Thursday: please ensure your child wears their sports uniform on these days (including a hat).

Term 1: Tennis (external provider) & traditional Australian sports.

PSSA Sports: AFL, Cricket, Netball, Basketball, Hockey, Rugby League, Soccer, Tennis, Touch Football, Oztag.

Personal Development & Health:

Term 1: Positive Relationships

Term 2: Cyber safety

Term 3: Rock and Water

Term 4: Child Protection - My right to be safe.

Major School Carnivals:

Swimming: 4th March

Cross Country: 3rd May

Athletics: 24th July



MUSICAL



- On the back of a very successful 2022 Musical it is time for our students to shine yet again!
- All students K-6 will be involved in a class item.
- Original script is being written.
- Auditions for main roles will begin next week.



HIGH SCHOOL TRANSITION



- All students in Year 5 and 6 are invited to attend the Meet and Greet evening.
- Wednesday 3rd April is the KinCumber High School 'Sports Day' - all students in Year 6 are invited to attend this day regardless of what high school they will be attending.
- Further information about transition days will be provided in early Term 2.

- Regular revision is a valuable habit, particularly leading into high school.
- Reading and being read to, is ALWAYS of benefit.
- Mathematics - Essential Assessment - Sunset Maths
- Project Tasks - twice a term. Due Friday Week 6 and 10

Library Borrowing

- The library is open first half of lunch on Monday - Thursday for borrowing.
- Once a fortnight - class borrowing.
- Each student is able to borrow up to four books.



Music

Band - Senior band will start next Wednesday 14 Feb

Training Band will begin next Term 2 notes will be sent out end of T1

Strings –Seniors meet Monday and Friday 8:00am – 9:00am. Will perform at the Opera House for The Festival of Instrumental Music

Intermediates- meet in the hall Wednesdays 8:00am – 9:00am

Choir- Seniors: Year 3-6 meet Tuesdays 8:30- 9:00am

Research shows that if a school staff and community believes it can collectively accomplish great things, then they very likely will.

Questions?

Thank you for attending